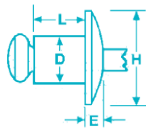
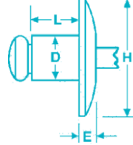


Aluminum OpenEnd

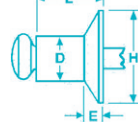
Buttonhead



Large Flange



Countersunk



P: 905-792-2255

E: SALES@ACERIVET.COM

W: ACERIVET.COM

5052 Aluminum Rivet • Aluminum Mandrel • IFI Grade 11

DIA.		HFS DESCRIPTION	BULK PART NO.**	GRIP RANGE		DRILL NO. & HOLE SIZE		H HEAD DIA. NOM		E HEAD HEIGHT MAX		L RIVET LENGTH MAX		TYPICAL ULTIMATE STRENGTH			
IN	MM			IN	MM	IN	MM	IN	MM	IN	MM	IN	MM	SHEAR LBS	TENSILE N	SHEAR LBS	TENSILE N
Buttonhead																	
3/32" (.094)	2.4	AB3-2A AB3-4A	M50200 M50202	.020-.125 .126-.250	.5-3.2 3.3-6.4	#41 .097- .100	#41 2.46- 2.54	.188	4.78	.032	.810	.250 .375	6.4 9.5	80	355	120	533
1/8" (.125)	3.2	AB4-1A AB4-2A AB4-3A AB4-4A AB4-5A AB4-6A AB4-8A AB4-10A	M50211 M50212 M50215 M50217 M50220 M50221 M50222 M50225	.020-.062 .063-.125 .126-.187 .188-.250 .251-.312 .313-.375 .376-.500 .501-.625	.5-1.6 1.7-3.2 3.3-4.8 4.9-6.4 6.5-7.9 8.0-9.5 9.6-12.7 12.8-15.9	#30 .129- .133	#30 3.28- 3.38	.250	6.35	.040	1.02	.212 .275 .337 .400 .462 .525 .650 .775	5.4 7.0 8.6 10.2 11.7 13.4 16.5 19.7	155	689	240	1067
5/32" (.156)	4.0	AB5-2A AB5-3A AB5-4A AB5-6A AB5-8A AB5-10A AB5-12A	M50232 M50234 M50235 M50236 M50237 M50238 M50239	.020-.125 .126-.187 .188-.250 .251-.375 .376-.500 .501-.625 .626-.750	.5-3.2 3.3-4.8 4.9-6.4 6.5-9.5 9.6-12.7 12.8-17.1 17.2-19.1	#20 .160- .164	#20 4.06- 4.16	.312	7.92	.050	1.27	.300 .362 .425 .550 .675 .800 .925	7.6 9.2 10.8 14.0 17.2 20.3 23.5	230	1023	340	1512
3/16" (.187)	4.8	AB6-2A AB6-4A AB6-6A AB6-8A AB6-10A AB6-12A AB6-14A AB6-16A	M50245 M50247 M50249 M50252 M50255 M50259 M50263 M50266	.020-.125 .126-.250 .251-.375 .376-.500 .501-.625 .626-.750 .751-.875 .876-1.000	.5-3.2 3.3-6.4 6.5-9.5 9.6-12.7 12.8-15.9 16.0-19.1 19.2-22.2 22.3-25.4	#11 .192- .196	#11 4.88- 4.98	.375	9.53	.060	1.52	.325 .450 .575 .700 .825 .950 1.075 1.200	8.3 11.5 14.6 17.8 21.0 24.2 27.3 30.5	330	1467	515	2290
1/4" (.250)	6.4	AB8-4A AB8-6A AB8-8A AB8-10A AB8-12A AB8-14A	M50281 M50283 M50285 M50287 M50289 M50288	.126-.250 .251-.375 .376-.500 .501-.625 .626-.750 .751-.875	3.3-6.4 6.5-9.5 9.6-12.7 12.8-15.9 16.0-19.1 19.2-22.2	F.257- .261	F 6.53- 6.63	.500	12.70	.080	2.03	.500 .625 .750 .875 1.000 1.125	12.7 15.9 19.1 21.0 25.4 28.6	600	2668	800	3558
Large Flange																	
1/8" (.125)	3.2	ABL4-2A ABL4-3A ABL4-4A ABL4-6A ABL4-8A	M50214 M50224 M50219 M50226 M50227	.063-.125 .126-.187 .188-.250 .313-.375 .376-.500	1.7-3.2 3.3-4.8 4.9-6.4 8.0-9.5 9.6-12.7	#30 .129- .133	#30 3.28- 3.38	.375	9.53	.065	1.65	.275 .337 .400 .525 .650	7.0 8.6 10.2 13.3 16.5	155	689	240	1067
5/32" (.156)	4.0	ABL5-4A	M50244	.188-.250	4.9-6.4	#20 .160- .164	#20 4.06- 4.16	.468	11.90	.070	1.20	.425 .550	10.8 14.0	230	1023	340	1512
3/16" (.187)	4.8	ABL6-4A ABL6-6A ABL6-8A ABL6-10A ABL6-12A ABL6-16A	M50248 M50250 M50253 M50256 M50260 M50267	.126-.250 .251-.375 .376-.500 .501-.625 .626-.750 .875-1.00	3.3-6.4 6.5-9.5 9.6-12.7 12.8-15.9 16.0-19.1 22.2-25.4	#11 .192- .196	#11 4.88- 4.98	.615	15.88	.090	2.28	.450 .575 .700 .825 .950 1.200	11.5 14.6 17.8 21.0 24.2 30.5	330	1467	515	2290
120° Countersunk																	
1/8" (.125)	3.2	AC4-2A AC4-3A AC4-4A AC4-6A	M50213 M50216 M50218 M50241	.092-.125 .126-.187 .188-.250 .313-.375	2.3-3.2 3.3-4.8 4.9-6.4 8.0-9.5	#30 .129- .133	#30 3.28- 3.38	.220	5.59	.031	1.14	.275 .337 .400 .525	7.0 8.6 10.2 13.3	155	689	240	1050
5/32" (.156)	4.0	AC5-4A AC5-6A	M50240 M50242	.188-.250 .313-.375	4.9-6.4 8.0-9.5	#20 .160- .164	#20 4.06- 4.16	.281	7.20	.040	1.20	.425 .550	10.8 14.0	230	1020	340	1512
3/16" (.187)	4.8	AC6-4A AC6-6A AC6-8A	M50251 M50229 M50246	.151-.250 .251-.375 .376-.500	3.8-6.4 6.5-9.5 9.6-12.7	#11 .192- .196	#11 4.88- 4.98	.350	8.89	.050	1.27	.407 .575 .700	10.3 14.6 17.8	330	1467	515	2290

KLIIK-FAST RIVETS conform to IFI-114 (inch) and IFI-505 (metric). ** Also available in various packaged quantities.