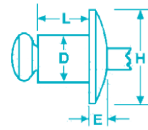
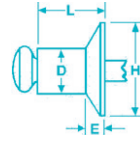


Closed-End

Buttonhead



Countersunk



P: 905-792-2255

E: SALES@ACERIVET.COM

W: ACERIVET.COM

5056 Aluminum

DIA.		HFS DESCRIPTION	BULK PART NO.**	GRIP RANGE		DRILL NO. & HOLE SIZE	H HEAD DIA. NOM		E HEAD HEIGHT MAX		L RIVET LENGTH MAX		TYPICAL ULTIMATE STRENGTH			
IN	MM			IN	MM		MM	IN	MM	IN	MM	IN	MM	SHEAR		TENSILE
												LBS	N	LBS	N	
Buttonhead																
1/8" (.125)	3.2	AB4-1C	M56000	.020-.062	.5-1.6	#30 .129-.133	.236	5.99	.050	1.27	.297	7.54	240	1060	280	1240
		AB4-2C	M56001	.063-.125	1.7-3.2						.360	9.14				
		AB4-3C	M56002	.126-.187	3.3-4.8						.422	10.72				
		AB4-4C	M56003	.188-.250	4.9-6.4						.485	12.32				
		AB4-5C	M56004	.251-.312	6.5-7.9						.547	13.89				
AB4-6C	M56015	.313-.375	8.0-9.5	.610	15.50											
5/32" (.156)	4.0	AB5-2C	M56005	.020-.125	.51-3.2	#20 .160-.164	.315	8.00	.065	1.65	.375	9.53	350	1550	480	2130
AB5-3C	M56006	.126-.187	3.3-4.8	.437	11.10					.562	12.70					
AB5-5C	M56007	.188-.312	4.9-6.35													
3/16" (.187)	4.8	AB6-2C	M56008	.020-.125	.51-3.2	#11 .192-.196	.374	9.50	.080	2.03	.406	10.31	500	2230	690	3070
AB6-4C	M56009	.126-.250	3.3-4.75	.531	11.89											
AB6-6C	M56010	.251-.375	6.5-9.5	.656	16.66											
AB6-8C	M56011	.376-.500	9.6-12.7	.781	19.84											
AB6-10C	M56012	.501-.625	12.8-15.9	.906	23.01											
1/4" (.250)	6.4	AB8-4C	M56013	.126-.250	3.2-6.4	F	.512	13.0	.090	2.29	.570	14.48	900	3950	1100	5000
AB8-6C	M56014	.251-.375	6.5-9.5	.695	17.65											
120° Countersunk																
1/8" (.125)	3.2	AC4-2C	M56016	.063-.125	1.7-3.2	#30 .129-.133	.236	5.99	.050	1.27	.395	10.03	240	1067	280	1245
AC4-3C	M56017	.126-.187	3.3-4.8	.457	11.61											
AC4-4C	M56018	.188-.250	4.9-6.4	.520	13.21											
3/16" (.187)	4.8	AC6-4C	M56019	.126-.250	3.3-4.75	#11 .192-.196	.374	9.50	.540	13.72	.601	13.67	500	2224	690	3070
All Aluminum Buttonhead - IFI Grade 9																
1/8" (.125)	3.2	AB4-2AC	M56201	.063-.125	1.7-3.2	#30 .129-.133	.236	5.99	.050	1.27	.360	9.14	100	445	110	489
AB4-3AC	M56202	.126-.187	3.3-4.8	.422	10.72											
AB4-4AC	M56203	.188-.250	4.9-6.4	.485	12.32											
5/32" (.156)	4.0	AB5-4AC	M56207	.126-.250	3.3-4.75	#20 .160-.164	.315	8.00	.065	1.65	.500	11.10	130	578	160	712
3/16" (.187)	4.8	AB6-2AC	M56208	.020-.125	.51-3.2	#11 .192-.196	.374	9.50	.080	2.03	.406	10.31	210	934	250	1112
AB6-4AC	M56209	.126-.250	3.3-4.75	.531	11.89											
AB6-6AC	M56210	.251-.375	6.5-9.5	.656	16.66											
AB6-8AC	M56211	.376-.500	9.6-12.7	.781	19.84											
AB6-10AC	M56022	.501-.625	12.8-15.9	.906	23.01											

Stainless Rivet • Stainless Mandrel • IFI Grade 51 • Buttonhead

1/8" (.125)	3.2	SSB4-2SC	M56403	.020-.125	.51-3.2	#30 .129-.133	.236	5.99	.039	.990	.360	9.14	400	1779	450	2002
SSB4-3SC	M56405	.126-.187	3.3-4.8	.422	10.72											
SSB4-4SC	M56406	.188-.250	4.9-6.4	.485	12.32											
3/16" (.187)	4.8	SSB6-2SC	M56408	.020-.125	.51-3.2	#11 .192-.196	.374	9.49	.070	1.77	.406	10.31	850	3781	900	4003
SSB6-4SC	M56409	.126-.250	3.3-4.75	.531	11.89											
SSB6-6SC	M56410	.251-.375	6.5-9.5	.656	16.66											
SSB6-8SC	M56411	.376-.500	9.6-12.7	.781	19.84											
SSB6-10SC	M56412	.501-.625	12.8-15.9	.906	23.01											

Note: A slightly smaller mandrel diameter is required for closed-end rivets; therefore when setting closed-end rivets using Marson brand rivet setting tools, we recommend you use one size smaller nosepiece when possible (i.e., to set 1/8" rivets, use 3/32" nosepiece).

KLIK-FAST RIVETS conform to IFI-114 (inch) and IFI-505 (metric). ** Also available in various packaged quantities.