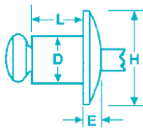


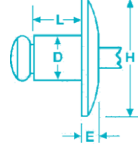
Stainless / Steel

Open End

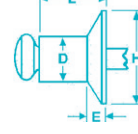
Buttonhead



Large Flange



Countersunk



P: 905-792-2255

E: SALES@ACERIVET.COM

W: ACERIVET.COM

Stainless Rivet • Coated Steel Mandrel • IFI Grade 50

DIA.		HFS DESCRIPTION	BULK PART NO.**	GRIP RANGE		DRILL NO. & HOLE SIZE		H HEAD DIA. NOM		E HEAD HEIGHT MAX		L RIVET LENGTH MAX		TYPICAL ULTIMATE STRENGTH				
IN	MM			IN	MM	IN	MM	IN	MM	IN	MM	IN	MM	SHEAR		TENSILE		
				IN	N	LBS	N											
Buttonhead																		
1/8" (.125)	3.2	SSB4-1	M50511	.020-.062	.5-1.6							.212	5.4					
		SSB4-2	M50512	.063-.125	1.7-3.2								.275	7.0				
		SSB4-3	M50515	.126-.187	3.3-4.8	#30	#30						.337	8.6				
		SSB4-4	M50517	.188-.250	4.9-6.4	.129-	3.28-	.250	6.35	.040	1.02		.400	10.2	520	2310	600	2660
		SSB4-5	M50526	.251-.312	6.5-7.9	.133	3.38						.462	11.7				
		SSB4-6	M50521	.313-.375	8.0-9.5								.525	13.4				
		SSB4-8	M50522	.376-.500	9.6-12.7								.650	16.5				
5/32" (.156)	4.0	SSB5-2	M50532	.020-.125	.5-3.2	#20	#20					.300	7.6					
		SSB5-4	M50535	.188-.250	4.7-6.4	.160-	4.06-	.312	7.92	.045	1.14		.425	8.0	785	3490	1040	4620
		SSB5-6	M50536	.251-.375	6.5-9.5	.164	4.16						.550	14.0				
3/16" (.187)	4.8	SSB6-2	M50545	.020-.125	.5-3.2							.325	8.3					
		SSB6-4	M50547	.126-.250	3.3-6.4								.450	11.5				
		SSB6-6	M50549	.251-.375	6.5-9.5	#11	#11						.575	14.6				
		SSB6-8	M50550	.376-.500	9.6-12.7	.192-	4.88-	.375	9.53	.055	1.40		.700	17.8	1150	5110	1300	5780
		SSB6-10	M50557	.501-.625	12.8-15.9	.196	4.98						.825	21.0				
		SSB6-12	M50558	.626-.750	16.0-19.1								.950	24.2				
		SSB6-16	M50566	.751-1.000	19.2-25.4								1.120	30.5				
Large Flange																		
1/8" (.125)	3.2	SSBL4-2	M50513	.063-.125	1.7-3.2	#30	#30					.275	7.0					
		SSBL4-3	M50518	.126-.187	3.3-4.8	.129-	3.28-	.375	9.53	.045	1.14		.337	8.6	520	2310	600	2660
		SSBL4-4	M50519	.188-.250	4.9-6.4	.133	3.38						.400	10.2				
3/16" (.187)	4.8	SSBL6-4	M50548	.126-.250	3.3-6.4							.450	11.5					
		SSBL6-6	M50553	.251-.375	6.5-9.5	#11	#11						.575	14.6				
		SSBL6-8	M50556	.376-.500	9.6-12.7	.192-	4.88-	.615	15.88	.082	2.08		.700	17.8	1150	5110	1300	5780
		SSBL6-10	M50551	.501-.625	12.8-15.9	.196	4.98						.825	21.0				
		SSBL6-12	M50555	.626-.750	16.0-19.1								.950	24.2				
120° Countersunk																		
1/8" (.125)	3.2	SSC4-2	M50523	.092-.125	2.3-3.2	#30	#30					.275	7.0					
		SSC4-3	M50524	.126-.187	3.3-4.8	.129-	3.28-	.220	5.59	.031	1.14		.337	8.6	520	2310	600	2660
		SSC4-4	M50525	.188-.250	4.9-6.4	.133	3.38						.400	10.2				
		SSC4-5	M50528	.251-.312	6.5-7.9								.462	11.7				
3/16" (.187)	4.8	SSC6-4	M50529	.151-.250	3.8-6.4	#11	#11	.350	8.89	.050	1.27	.407	10.3	1150	5110	1300	5780	

KLIK-FAST RIVETS conform to IFI-114 (inch) and IFI-505 (metric). ** Also available in various packaged quantities.