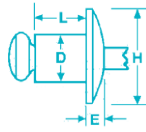
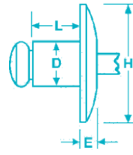


Steel Open End

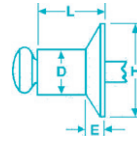
Buttonhead



Large Flange



Countersunk



P: 905-792-2255

E: SALES@ACERIVET.COM

W: ACERIVET.COM

Plated-Steel Rivet • Coated Steel Mandrel • IFI Grade 30

DIA.		HFS DESCRIPTION	BULK PART NO.**	GRIP RANGE		DRILL NO. & HOLE SIZE		H HEAD DIA. NOM		E HEAD HEIGHT MAX		L RIVET LENGTH MAX		TYPICAL ULTIMATE STRENGTH			
IN	MM			IN	MM	IN	MM	IN	MM	IN	MM	IN	MM	SHEAR		TENSILE	
				LBS	N	LBS	N										
Buttonhead																	
1/8" (.125)	3.2	SB4-1	M50111	.020-.062	5-1.6							.212	5.4	305	1356	410	1823
		SB4-2	M50112	.063-.125	1.7-3.2							.275	7.0				
		SB4-3	M50115	.126-.187	3.3-4.8	#30	#30					.337	8.6				
		SB4-4	M50117	.188-.250	4.9-6.4	.129-	3.28-	.250	6.35	.040	1.02	.400	10.2				
		SB4-5	M50120	.251-.312	6.5-7.9	.133	3.38					.462	11.7				
		SB4-6	M50121	.313-.375	8.0-9.5							.525	13.4				
		SB4-8	M50122	.376-.500	9.6-12.7							.650	16.5				
		SB4-10	M50125	.501-.625	12.8-15.9						.775	19.7					
5/32" (.156)	4.0	SB5-2	M50132	.020-.125	5-3.2							.300	7.6	420	1868	600	2668
		SB5-3	M50134	.126-.187	3.3-4.8	#20	#20					.362	9.2				
		SB5-4	M50135	.188-.250	4.9-6.4	.160-	4.06-	.312	7.92	.050	1.27	.425	10.8				
		SB5-6	M50136	.251-.375	6.5-9.5	.164	4.16					.550	14.0				
		SB5-8	M50137	.376-.500	9.6-12.7							.675	17.2				
		SB5-10	M50131	.501-.675	12.8-17.1							.800	20.3				
		SB5-12	M50133	.676-.750	17.2-19.1							.925	23.5				
3/16" (.187)	4.8	SB6-2	M50145	.020-.125	5-3.2							.325	8.3	610	2713	870	3889
		SB6-4	M50147	.126-.250	3.3-6.4	#11	#11					.450	11.5				
		SB6-6	M50149	.251-.375	6.5-9.5	.192-	4.88-	.375	9.53	.060	1.52	.575	14.6				
		SB6-8	M50152	.376-.500	9.6-12.7	.196	4.98					.700	17.8				
		SB6-10	M50155	.501-.625	12.8-15.9							.825	21.0				
		SB6-12	M50159	.626-.750	16.0-19.1							.950	24.2				
		SB6-16	M50163	.751-.875	19.2-22.2							1.075	27.3				
		SB6-16	M50170	.876-1.000	22.3-25.4						1.200	30.5					
1/4" (.250)	6.4	SB8-2	M50179	.020-.125	5-3.2							.375	9.4	1270	5649	1550	6894
		SB8-4	M50181	.126-.250	3.3-6.4	F	F					.500	12.7				
		SB8-6	M50183	.251-.375	6.5-9.5	.257-	6.53-	.500	12.70	.080	2.03	.625	15.9				
		SB8-8	M50185	.376-.500	9.6-12.7	.261	6.63					.750	19.1				
		SB8-10	M50187	.501-.625	12.8-15.9							.875	21.0				
		SB8-12	M50189	.626-.750	16.0-19.1							1.000	25.4				
		SB8-16	M50188	.751-.875	19.2-22.2							1.125	28.6				
		SB8-16	M50190	.876-1.000	22.3-25.4						1.250	31.8					
Large Flange																	
1/8" (.125)	3.2	SBL4-2	M50114	.063-.125	1.7-3.2							.275	7.0	305	1356	410	1823
		SBL4-3	M50124	.126-.187	3.3-4.8	#30	#30					.337	8.6				
		SBL4-4	M50119	.188-.250	4.9-6.4	.129-	3.28-	.375	9.53	.065	1.65	.400	10.2				
		SBL4-6	M50108	.313-.375	8.0-9.5	.133	3.38					.525	13.3				
		SBL4-8	M50109	.376-.500	9.6-12.7							.650	16.5				
5/32" (.156)	4.0	SBL5-4	M50138	.188-.250	4.9-6.4	#20	#20					.425	10.8	420	1868	600	2668
		SBL5-6	M50139	.251-.375	6.5-9.5	.160-	4.06-	.468	11.90	.070	1.77	.550	14.0				
		SBL5-8	M50110	.376-.500	9.6-12.7	.164	4.16					.675	17.2				
3/16" (.187)	4.8	SBL6-4	M50148	.126-.250	3.3-6.4							.450	11.5	610	2713	870	3869
		SBL6-6	M50150	.251-.375	6.5-9.5	#11	#11					.575	14.6				
		SBL6-8	M50153	.376-.500	9.6-12.7	.192-	4.88-	.615	15.88	.090	2.28	.700	17.8				
		SBL6-10	M50156	.501-.625	12.8-15.9	.196	4.98					.825	21.0				
		SBL6-12	M50160	.626-.750	16.0-19.1							.950	24.2				
		SBL6-16	M50165	.751-.875	19.2-22.2							1.075	27.3				
		SBL6-16	M50167	.876-1.000	22.3-25.4						1.200	30.5					
120° Countersunk																	
1/8" (.125)	3.2	SC4-2	M50113	.092-.125	2.3-3.2							.275	7.0	305	1356	410	1823
		SC4-3	M50116	.126-.187	3.3-4.8	#30	#30					.337	8.6				
		SC4-4	M50118	.188-.250	4.9-6.4	.129-	3.28-	.220	5.59	.031	1.14	.400	10.2				
		SC4-6	M50126	.313-.375	6.5-9.5	.133	3.38					.525	13.3				
		SC4-8	M50127	.376-.500	9.6-12.7						.650	16.5					
5/32" (.156)	4.0	SC5-4	M50140	.188-.250	4.9-6.4	#20	#20					.425	10.8	420	1868	600	2668
						.160-	4.06-	.281	7.20	.040	1.20						
						.164	4.16										
3/16" (.187)	4.8	SC6-4	M50151	.151-.250	3.8-6.4	#11	#11					.450	11.4	610	2713	870	3869
		SC6-6	M50129	.251-.375	6.5-9.5	.192-	4.88-	.350	8.89	.050	1.27	.575	14.6				

KLIK-FAST RIVETS conform to IFI-114 (inch) and IFI-505 (metric). ** Also available in various packaged quantities.