

GB713

PNEUDRAULIC INSTALLATION TOOL SERIES

GAGE BILT

RIVET & LOCKBOLT TOOLS

44766 Centre Ct. Clinton Twp. MI 48038 USA

+1 586. 226.1500

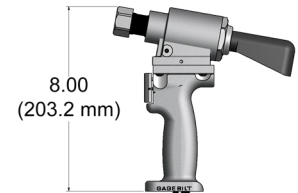
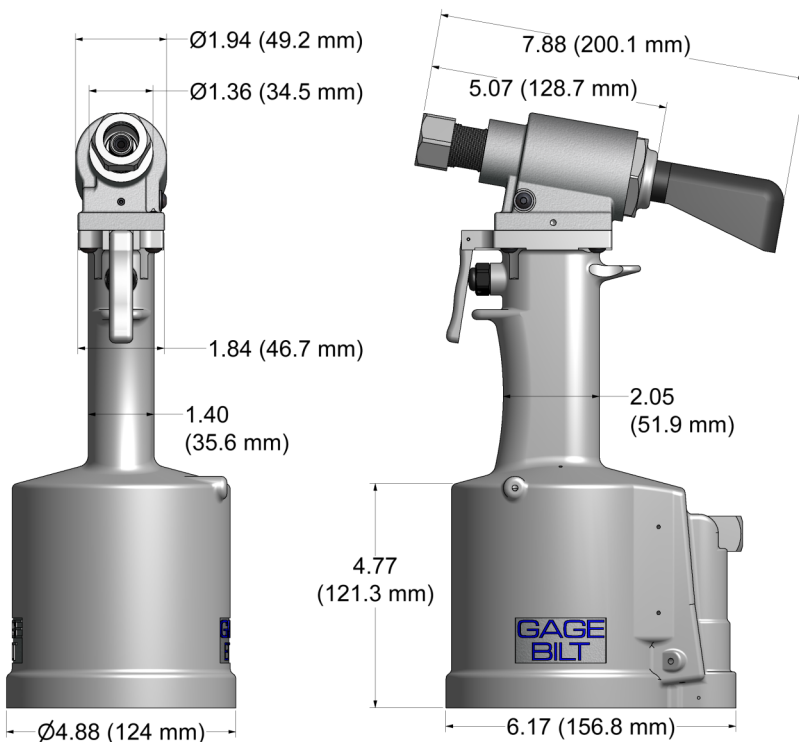
+1 586. 226.1505

solutions@gagebilt.com

www.gagebilt.com

GB713

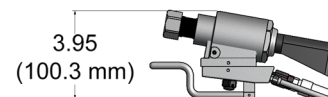
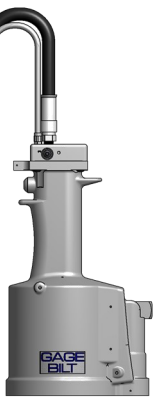
Stroke - .760" (19.3mm)
Tool weight - 6.50 lbs. (2.9 kg)
Pull load - 4,500 (20.0 kN)



GB713SH

Stroke - .760" (19.3 mm)
Hand held weight - 2.50 lbs. (1.1 kg)
Entire tool weight - 7.50 lbs. (3.4 kg)
Pull load - 4,500 (20.0 kN)
Standard Hyd. Hose Length - 8ft (2.4m)

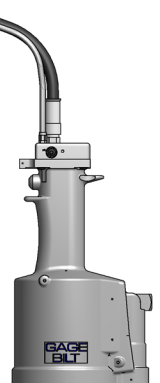
*5ft Hyd. Hoses are recommended with use of Backpack
Additional custom lengths are available.*



GB713SR

Stroke - .760" (19.3 mm)
Hand held weight - 2.00 lbs. (0.9 kg)
Entire tool weight - 7.00 lbs. (3.2 kg)
Pull load - 4,500 (20.0 kN)
Standard Hyd. Hose Length - 3ft (.91m)

*5ft Hyd. Hoses are recommended with use of Backpack
Additional custom lengths are available.*



The **GB713** series are pneumatic-hydraulic installation tools, designed specifically for the efficient installation of blind rivets and lockbolt fasteners. They can be operated in any position and have a rated pull load of 4,500 (20.0 kN) pounds with 90 psi (6.2 bar) air pressure at the air inlet.

The **GB713SH** and **GB713SR** split handle installation tools offer a unique "split" system providing the operator with an ergonomic tool with reduced hand held weight. The **GB713SH** comes with 8 feet (2.4 m) of hose and the **GB713SR** comes with 3 feet (.91 m) of hose. Use with our "NEW" Split-System Backpacks to increase user mobility, ergonomics and productivity. Contact GAGE BILT for more information.

The **GB713** series tools operate on 90 to 100 psi. (6.2-6.9 bar) of air pressure, with 90 psi. (6.2 bar) providing the maximum efficiency. At 90 psi. (6.2 bar) of air pressure, the **GB713** series does not exceed 81.5 dB(A) and consumes .30 SCF/cycle (8.50 L/cycle). The air inlet is provided with 1/4-18 female pipe thread to accept the users air hose fitting.

**NOSE ASSEMBLIES ARE NOT FURNISHED WITH
TOOL AND MUST BE ORDERED SEPARATELY**





GB713 ACCESSORIES



Approved for use on Gage Bilt CE installation tools and/or other manufacturer's CE approved tools of similar design. (Sold Separately)

ACCESSORIES (Sold Separately)

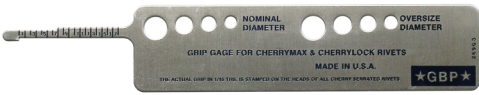
Catcher Bag-Stem
#704214
(Sold Separately)



Air Bleeder Assy
#704153
(Sold Separately)



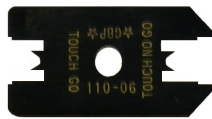
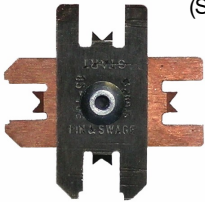
Grip Gage #269G3
For CHERRYMAX®, "A" Code,
NAS 1900 series and CHERRYLOCK® rivets
(Sold Separately)



Grip Gage #GB105093
For NAS LOCKBOLTS and blind fasteners
(Sold Separately)



Gage Bilt also supplies pin & collar swage inspection gages to certify swage installation.
(Sold Separately)



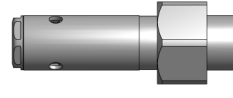
Riveter Kits

Gage Bilt offers a wide selection of standard and custom kits tailored to your needs. Contact us for more information.
(Sold Separately)



NOSE ASSEMBLY CHART (For Non-Vacuum Tools Only) (Sold Separately)

STRAIGHT
(Sold Separately)



RIGHT ANGLE
(Sold Separately)



OFFSET
(Sold Separately)



FASTENER	DIA.	STRAIGHT	*RIGHT ANGLE	*OFFSET
C6L® LOCKBOLTS	3/16	LB06-722-20	LB06-722-60	
	1/4	LB08-722-20	LB08-722-60	
MAGNA-GRIP® LOCKBOLTS	3/16	MG06-722-20	MG06-722-60	
	1/4	MG08-722-20	MG08-722-60	
BLIND BOLT (SINGLE ACTION) WITH OR W/OUT DRIVE WASHER MS90353S & U / MS90354S & U MS21140S & U / MS21141S & U MAXI-BOLT®, BACB30YY, YU, & YT	1/8	SB04-752C-20	SB04-752C-45	SB04-751C-54RA 4
	5/32	SB05-752C-20	SB05-752C-45	SB05-751C-54RA 4
	3/16	SB05-752C-80	SB06-752B-45	SB06-751B-54RA 4
	1/4	SB06-752B-80	SB08-713-20 3	SB08-713A-58RA 3
BLIND BOLT (SINGLE ACTION) WITH DRIVE WASHER MS90353S & U / MS90354S & U MS21140S & U / MS21141S & U CR7000 SERIES, BACB30YY, YU, & YT	1/8	UBB04-752C-20	UBB04-752C-45	UBB04-751C-54RA 4
	5/32	UBB05-752C-20	UBB05-752C-45	UBB05-751C-54RA 4
	3/16	UBB05-752C-80	UBB06-752B-45	UBB06-751B-54RA 4
	1/4	UBB06-752B-80	UBB08-713-20 3	UBB08-713A-58RA 3
EN6122 & UAB130-EU EN6127 & UAB6127-EU EN6128 & UAB100-EU EN6129 & UABP-EU	5/32	UAB568-713-21 5	UAB568-713-61 5	
	3/16			UAB06-751B-54RA 4
BLIND RIVET (SINGLE ACTION) WITH OR W/OUT DRIVE WASHER NAS1900 S & U SERIES	1/8	SMLS04-752C-20	SMLS04-752C-45	SMLS04-751C-54RA 4
	5/32	SMLS05-752C-20	SMLS05-752C-45	SMLS05-751C-54RA 4
	3/16	SMLS06-752B-20	SMLS06-752B-45	SMLS06-751C-54RA 4
	1/4	SMLS08-713-20		SMLS08-713B-58RA 4
"A" CODE NAS1398A & NAS1399A	3/32	3A-352B-25	4A-752C-45	3A-751C-54RA 4
	1/8	4A-752C-20	5A-752C-45	4A-751C-54RA 4
	5/32	5A-752C-20	6A-752B-45	5A-751C-54RA 4
	3/16	6A-752B-20		6A-751C-54RA 4
T RIVET®	3/16	6T-352-21	6T-352-61	
	1/4	8T-352-21	8T-352-61	
PROTRUDING HEAD, MULTI-GRIP BLIND RIVETS	3/16	MGL06-752A-21	MGL06-752A-61	MGL06-713B-58RA
	1/4	MGL08-752A-21	MGL08-752A-61	MGL08-713B-58RA
MONOBOLT®	3/16	MB06-752A-21	MB06-752A-61	
	1/4	MB08-752A-21	MB08-752A-61	
CONTAINER BOLT (R 12) HLFP, HLPMA, HLPF, HLPFS HLPSC & HLPSPM	3/8	HT12-713-20		
TLR RIVET®	1/4	8TLR-352-21	8TLR-352-61	
CHERRYMAX®, CHERRYMAX® AB', BACR15RF/FP, BACR15GF/GK	1/8	456MAX-751-23 1	456MAX-751A-61 1	456MAX-751D-54RA 1 4
	5/32			456MAX-731-43OS 1
	3/16			
	1/4	08MAX-752B-20	08MAX-752B-45	08MAX-713A-58RA
ASP® ASP 2, ASP PF, ASP 4 FF, ASP 2 F, ASP 2 LC	13/64	ASP06-752C-20	ASP06-752C-45	ASP06-751C-54RA 4
	17/64	ASP08-752B-20	ASP08-752B-45	ASP06-752B-43OS
	21/64	ASP10-713-20	ASP10-713-45	ASP10-204D-27OS
STANDARD MBC® NAS1719, NAS1720 NAS1721	1/8	MBC04-752C-20	MBC04-752C-45	MBC04-751C-54RA 4
	5/32	MBC05-752C-20	MBC05-752C-45	MBC05-751C-54RA 4
	3/16	MBC06-752B-20	MBC06-752B-45	MBC06-751C-54RA 4
MBC® LOCK CREATOR NAS1719(X)(L), NAS1720(X)(L) NAS1721(X)(L)	1/8			
	5/32	456MAX-751-23 1	456MAX-751A-61 1	456MAX-751D-54RA 1 4
	3/16			456MAX-731-43OS 1
GROUND STUD, MB3454 BACS93B	8/32	GS8-752C-20	GS8-752C-45	GS8-751C-54RA 4
	10/32	GS10-752B-20	GS10-752B-45	GS10-752A-54RA 4
MILLIMETER PLUG SEAL	4mm	5N-751-23	5N-352-61	45N-751B-54RA 4
	5mm	6N-751-23	6N-352-61	6N-751C-54RA 4
	5/32	5N-751-23	5N-352-61	45N-751B-54RA 4
POP® OPEN END NAIL RIVET	3/16	6N-751-23	6N-352-61	6N-751C-54RA 4
1/4	8CN-713-21	8CN-713-61	8N-713A-58RA	
POP® CLOSED END NAIL RIVET (ALUMINUM MANDREL)	5/32	5CEA-751-23	5CEA-352-61	5CEA-751B-54RA 4
	3/16	6CEA-751-23	6CEA-352-61	6CEA-751C-54RA 4
POP® CLOSED END NAIL RIVET (STEEL MANDREL)	5/32	5CES-751-23	5CES-352-61	5CES-751B-54RA 4
	3/16	6CES-751-23	6CES-352-61	6CES-751C-54RA 4
	1/4			8CES-713A-58RA

T RIVET®, CHERRYMAX®, MAXI-BOLT®, AND MBC® ARE REGISTERED TRADEMARKS OF CHERRY AEROSPACE. MONOBOLT® AND TLR® ARE REGISTERED TRADEMARKS OF AVDEL UK LIMITED. ASP®, MAGNA-GRIP® AND C6L® ARE REGISTERED TRADEMARKS OF ARCONIC INC.

GAGE BILT CERTIFIES THE GB713 WILL INSTALL THE ABOVE FASTENERS

*ALL OFFSET 204 SERIES NOSES REQUIRE 751204 ADAPTER & 713152 STROKE LIMITER.
1) INSTALLS 1/8", 5/32" AND 3/16" DIAMETERS.
2) ALUMINUM ONLY.
3) 105 P.S.I. REQUIRED FOR MS90353 & MS90354.
4) THESE NOSES REQUIRE 713153 STROKE LIMITER.
5) INSTALLS 5/32", 3/16", AND 1/4"

NOTE: THE LAST 2 DIGITS OF THE NOSE ASSEMBLY REPRESENTS THE LENGTH THE NOSE EXTENDS FROM THE TOOL I.E. -20 = 2.0 INCHES Rev. 4/20